

Grid Tied Inverter

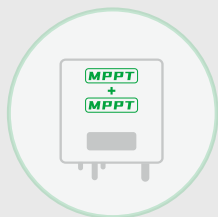
Single Phase: GT1-2K5/3K/3K3/3K6/4K/5K/6K D2

LIVOLTEK GT1 2.5~6K-D2 grid-tied inverters adopt modern design for residential requirements. Its compact size and dual MPPTs can be utilised in complex design environments. The maximum input current per string is up to 16A, making it compatible with large 182+ PV modules. Additionally, it features an integrated AFCI (Arc Fault Circuit Interrupter) for DC arc fault protection, providing a high level of safety. Our interactive Wi-Fi monitoring via our App or web platform allows for smart remote supervision and maintenance, making your solar energy pursuit effective and efficient.



Features

- DC input 16A per string
- Integrated AFCI(optional)
- Lower startup & Dual MPPT
- 150% oversizing and 110% overloading
- 7*24 hours monitoring and maintenance
- Plug-and-play design for quick installation



Dual MPPTs



Export Limitation



Optional AFCI Module

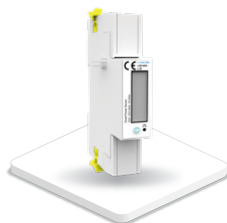


7*24 Remote Monitoring

Compatible Products



Wi-Fi Dongle



Smart Meter



Monitoring System

Specifications

Model	GT1-2K5D2	GT1-3KD2	GT1-3K3D2	GT1-3K6D2	GT1-4KD2	GT1-5KD2	GT1-6KD2
PV Input							
Max. DC Input Power	3750Wp	4500Wp	4950Wp	5400Wp	6000Wp	7500Wp	9000Wp
Max. DC Input Voltage	600V						
Min PV Input Voltage	70V						
Start-up DC Input Voltage	90V						
Nominal DC Input Voltage	360V						
MPPT Voltage Range	70-550V						
Max. PV Current	16A+16A						
Max. Short Circuit Current	20A+20A						
No. of MPPTs/Strings per MPPT	2/1						
AC Output							
Nominal AC Power	2500W	3000W	3300W	3600W	4000W	5000W	6000W
Max. Apparent Power	2750VA	3300W	3630VA	3690VA ^[1]	4400VA	5500VA ^[3]	6600VA
Rated AC Grid Output Current	11.4A	13.6A	15A	16.3A	18.2A	22.7A	27.3A
Max. AC Output Current	12.5A	15A	16.5A	18A ^[2]	20A	25A ^[4]	30A
Rated AC Grid Voltage	220V/230V/240V, L+N+PE						
AC Grid Voltage Range	154V-290V (Adjustable)						
Rated Grid Frequency	50Hz/60Hz						
Grid Frequency Range	45Hz-55Hz/55Hz-65Hz (Adjustable)						
Power Factor	> 0.99 Rated Power (Adjustable 0.8 Leading - 0.8 Lagging)						
THDi, Rated Power[%]	<3%						
Efficiency							
Max. Efficiency	97.50%	97.50%	97.50%	97.50%	97.50%	97.50%	97.50%
Euro Efficiency	96.50%	96.50%	96.50%	96.50%	97.00%	97.00%	97.00%
MPPT Efficiency	>99%						
Protection							
Surge Arrester	type II						
Over Current Protection	Support						
AC Short Circuit Protection	Support						
Over Voltage Protection	Support						
Anti-islanding Protection	Support						
Ground Fault Monitoring	Support						
Residual Current Monitoring Unit	Support						
DC Reverse Polarity Protection	Support						
AC Auxiliary Power Supply (APS)	Optional						
Anti-arc Protection	Optional						
General Data							
Dimension (W*H*D)	368*325*150mm						
Weight	12kg						
Protection Degree	IP65						
Cooling	Natural Cooling						
Operating Temperature Range	-30°C ~ +60°C (Derating at 45°C)						
Display	LED+APP						
Communication	RS485(Meter), Wi-Fi						
Topology	Transformerless						
Certifications and Standards							
Grid Regulation	"IEC61727, IEC62116, ABNT NBR 16149, ABNT NBR 16150, UL1741, EN50549"						
Safety/EMC Standard	IEC/EN 62109-1/-2, IEC/EN 61000-6-1/-2/-3/-4						
Standard Warranty	10 Years						

Remarks: [1]: 3690(3680W for G98); [2]: 18(16.7A for G98); [3]: 5500(4999W for AS4777); [4]: 25(22.7A for AS4777);

Hangzhou Livoltek Power Co., Ltd.

1418-35 Moganshan Road, Hangzhou, 310011, China +86 157 1576 8455

info@livoltek.com

www.livoltek.com